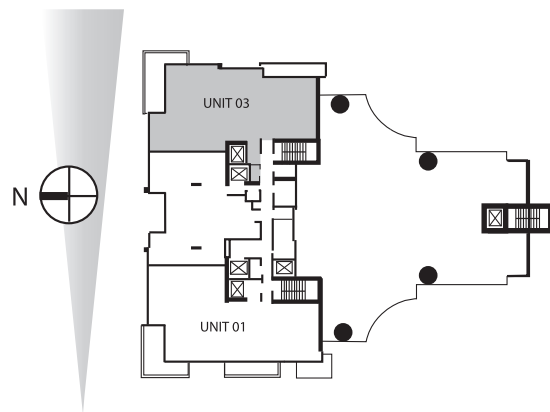
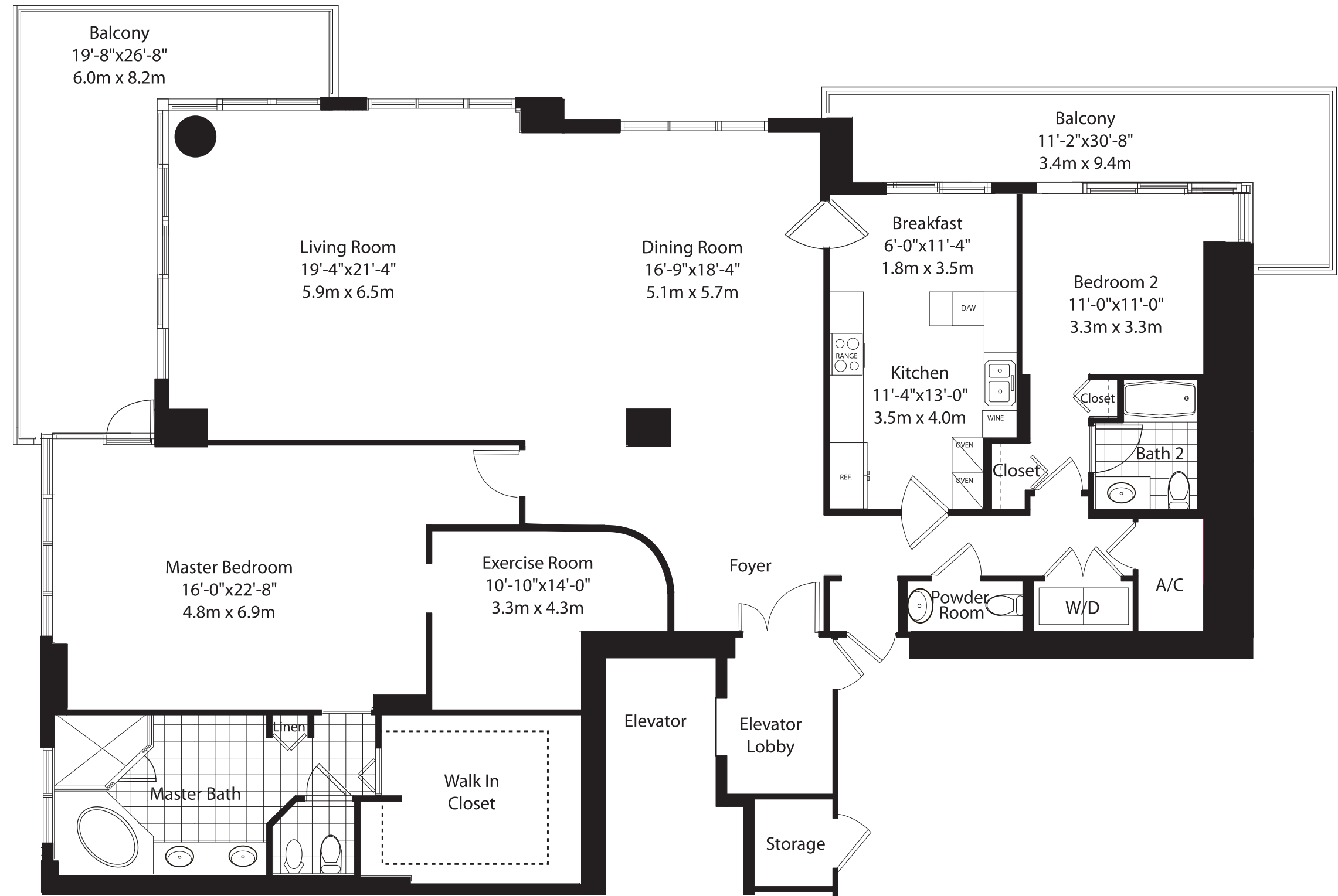


# RESIDENCE 703-903



ENCLOSED AREA	2,745 SF	253 SM
BALCONY/TERRACE	485 SF	45 SM
<b>TOTAL RESIDENCE</b>	<b>3,230 SF</b>	<b>298 SM</b>

Not to scale. All dimensions are approximate and all floorplans and development plans are subject to change in accordance with the agreement for sale. Oral representations cannot be relied upon as correctly stating the representations of the developer. For correct representations, make reference to the documents required by section 718.503 Florida Statutes to be furnished by developer to buyer or lessee. Stated dimensions are measured to the exterior boundaries of exterior walls, corridor walls and to the centerline of interior demising walls and may vary from the description and definition of the "Unit" set forth in the Declaration.